



# ANNUAL TITLE I INFORMATION

SHERWOOD ELEMENTARY FY24  
TITLE I CONTACT: RACHEL CADDELL



ACCORDING TO THE EVERY STUDENT SUCCEEDS ACT (ESSA), SCHOOLS ARE REQUIRED TO HAVE AN ANNUAL MEETING TO EXPLAIN THE TITLE I PROGRAM, WHICH INCLUDES:

- PARENT AND FAMILY ENGAGEMENT PLAN (PFEP)
- SCHOOL-PARENT COMPACT
- PARENTS' RIGHT TO KNOW
- THE SCHOOL IMPROVEMENT PLAN (SIP) GOALS
- THE IMPORTANCE OF PARENT AND FAMILY ENGAGEMENT
- THE USE OF FUNDS





TITLE I IS A FEDERAL GRANT THAT:

- ENSURES ALL CHILDREN HAVE THE OPPORTUNITY TO OBTAIN A HIGH-QUALITY EDUCATION AND REACH PROFICIENCY ON CHALLENGING STATE ACADEMIC STANDARDS AND ASSESSMENTS
- PROVIDES SUPPLEMENTAL FUNDS TO SCHOOL DISTRICTS TO ASSIST SCHOOLS WITH HIGH CONCENTRATIONS OF POVERTY TO MEET EDUCATIONAL GOALS
- REQUIRES SCHOOLS TO TRAIN PARENTS ON HOW TO SUPPORT THEIR CHILDREN ACADEMICALLY AT HOME
- REQUIRES SCHOOLS TO TRAIN TEACHERS ON HOW TO WORK EFFECTIVELY WITH PARENTS AND FAMILIES IN ORDER TO HELP IMPROVE ACADEMIC ACHIEVEMENT
- REQUIRES PARENTS TO HAVE AN ACTIVE ROLE IN THEIR CHILD'S ACADEMIC ACHIEVEMENT



## FUNDING

- DISTRICTS ALLOCATE TITLE I FUNDS TO QUALIFYING SCHOOLS BASED ON DIRECT CERTIFICATION DATA
- TITLE I FUNDS MUST SUPPLEMENT, NOT TAKE THE PLACE OF DISTRICT FUNDS
- A SPECIFIED AMOUNT OF TITLE I FUNDS MUST BE SPENT ON FAMILY ENGAGEMENT. PARENT INPUT IS CRITICAL SO SCHOOLS CAN PROVIDE TRAININGS/EVENTS THAT ARE RELEVANT TO FAMILIES
- PARENTS HAVE THE RIGHT TO GIVE INPUT REGARDING HOW THE SCHOOL WILL USE ITS TITLE I FUNDS

## WHO DECIDES HOW FUNDS ARE USED?

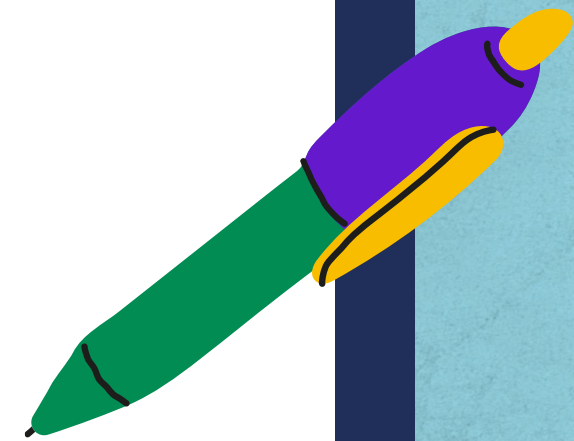
- YOUR ADMINISTRATIVE TEAM CONSIDERS DATA AND FEEDBACK COLLECTED THROUGHOUT THE SCHOOL YEAR TO WRITE THE SCHOOL'S TITLE I PLAN. THE TEAM AT SHERWOOD ELEMENTARY CONSISTS OF ADMINISTRATION AND MS. CADDELL
- USE OF TITLE I FUNDS MUST ALIGN WITH THE GOALS OF THE SCHOOL IMPROVEMENT PLAN (SIP).
- EVERY SCHOOL HAS A SCHOOL ADVISORY COUNCIL (SAC) COMPOSED OF:
  - PARENTS, TEACHERS, STAFF, COMMUNITY MEMBERS, ADMINISTRATORS, AND STUDENTS (AT MIDDLE AND HIGH SCHOOLS)
- THE SCHOOL ADVISORY COUNCIL HELPS DETERMINE HOW TO USE TITLE I FUNDS. PLEASE CONSIDER JOINING WE NEED YOUR VOICE!

COPIES OF THE TITLE I PLAN AND THE SCHOOL IMPROVEMENT PLAN (SIP) ARE AVAILABLE FOR FAMILIES IN THE TITLE I PARENT NOTEBOOK IN THE FRONT OFFICE.



## TITLE I PROGRAMS

- ALL TITLE I PUBLIC SCHOOLS IN BREVARD ARE SCHOOL-WIDE PROGRAMS, MEANING TITLE I FUNDS, ALONG WITH OTHER LOCAL, STATE, AND FEDERAL FUNDING SOURCES ARE USED TO SUPPORT ALL STUDENTS IN THE SCHOOL
- THE PRIMARY FOCUS OF THE TITLE I PROGRAM IS TO SUPPORT STUDENTS MOST AT-RISK FOR ACADEMIC FAILURE
- SCHOOL IDENTIFY SPECIFIC GROUPS OF STUDENTS THAT NEED MORE INTENSIVE ACADEMIC SUPPORT. THESE SUBGROUPS ARE SHOWN IN THE SCHOOL IMPROVEMENT PLAN (SIP)





## EDUCATIONAL STANDARDS:

- FLORIDA'S ACADEMIC CONTENT STANDARDS ESTABLISH HIGH EXPECTATIONS FOR ALL STUDENTS IN THE AREAS OF READING, MATHEMATICS, WRITING, AND SCIENCE
- THE FLORIDA BENCHMARKS FOR EXCELLENT STUDENT THINKING (B.E.S.T.) STANDARDS FOR LANGUAGE ARTS AND MATH IDENTIFY WHAT YOUR CHILD NEEDS TO KNOW AND BE ABLE TO DO. INFORMATION CAN BE FOUND AT: [WWW.CPALMS.ORG](http://WWW.CPALMS.ORG)



## TESTING

- PARENTS/FAMILIES WILL BE PROVIDED INFORMATION REGARDING THE LEVEL OF ACHIEVEMENT OF THEIR CHILD ON EACH STATE ACADEMIC ASSESSMENT THAT IS REQUIRED BY LAW
- PARENTS/FAMILIES MUST BE PROVIDED MATERIALS TO SUPPORT THEIR CHILD IF THEY ARE PERFORMING BELOW GRADE LEVEL ON THE STATE ACADEMIC ASSESSMENTS IN READING AND/OR MATH
- PARENTS/FAMILIES OF STUDENTS THAT ARE IDENTIFIED AS SUBSTANTIALLY DEFICIENT IN READING BASED ON THE STATE ACADEMIC ASSESSMENTS MUST BE PROVIDED WITH A "READ AT HOME" PLAN
- TO THE EXTENT THAT IS FEASIBLE, TESTING INFORMATION MUST BE TRANSLATED INTO A LANGUAGE THE PARENTS/FAMILIES CAN UNDERSTAND.





# TESTING SCHEDULE

## KINDERGARTEN - 2ND GRADE

STAR PM1 ELA: SEPTEMBER 12TH

STAR PM1 MATH: SEPTEMBER 13TH

IREADY ELA AND MATH WINDOW:

OCTOBER 2ND - OCTOBER 9TH

## 3RD - 6TH GRADE

FAST PM1 ELA: SEPTEMBER 6TH

FAST PM1 MATH: SEPTEMBER 7TH

IREADY ELA AND MATH WINDOW:

AUGUST 28TH - SEPTEMBER 5TH



## PARENTS' RIGHT TO KNOW

- PARENTS HAVE THE RIGHT TO REQUEST AND RECEIVE TIMELY INFORMATION REGARDING THE PROFESSIONAL QUALIFICATIONS OF THEIR CHILD'S TEACHERS AND PARAPROFESSIONALS
- PARENTS MUST BE NOTIFIED IF THEIR CHILD IS ASSIGNED TO OR TAUGHT FOR FOUR OR MORE CONSECUTIVE WEEKS BY A TEACHER WHO IS NOT STATE CERTIFIED.





## SCHOOL-PARENT COMPACT

- EACH SCHOOL MUST HAVE A SCHOOL-PARENT COMPACT THAT IS WRITTEN BY PARENTS, TEACHERS, AND STUDENTS
- THE COMPACT OUTLINES THE SHARED RESPONSIBILITIES OF STUDENTS, PARENTS, AND TEACHERS FOR IMPROVED STUDENT ACADEMIC ACHIEVEMENT
- THE COMPACT WILL BE REVIEWED WITH FAMILIES THROUGHOUT THE YEAR
- THE COMPACT IS REQUIRED TO BE REVISED EACH YEAR USING INPUT FROM PARENTS, STUDENTS, AND TEACHERS.





### PARENT AND FAMILY ENGAGEMENT PLAN (PFEP):

- EACH TITLE I SCHOOL MUST ANNUALLY WRITE, WITH INPUT FROM FAMILIES, TEACHERS, AND COMMUNITY MEMBERS A WRITTEN PARENT AND FAMILY ENGAGEMENT PLAN (PFEP)
- THE PARENT AND FAMILY ENGAGEMENT PLAN (PFEP) DESCRIBES HOW THE SCHOOL WILL CARRY OUT PARENT ENGAGEMENT REQUIREMENTS, INCLUDING THE DEVELOPMENT OF A SCHOOL-PARENT COMPACT
- THE PARENT AND FAMILY ENGAGEMENT PLAN (PFEP) AND THE SCHOOL-PARENT COMPACT CAN BOTH BE FOUND IN THE TITLE I PARENT NOTEBOOK FOUND IN THE FRONT OFFICE.

### PARENT AND FAMILY ENGAGEMENT REQUIREMENTS - TITLE I SCHOOLS MUST:

- HAVE AN ANNUAL EVALUATION OF THE EFFECTIVENESS OF THE SCHOOL'S PARENT AND FAMILY ENGAGEMENT PLAN (PFEP) THEN USE THAT EVALUATION TO DESIGN AND REVISE THE PLAN
- EXPLAIN THE CURRICULUM, ASSESSMENTS, AND THE MINIMUM STANDARDS THAT STUDENTS ARE REQUIRED TO MEET
- PROVIDE ACADEMIC TRAININGS/EVENTS TO HELP PARENTS BETTER HELP THEIR CHILDREN AT HOME
- OFFER A FLEXIBLE NUMBER OF MEETING DATES AND TIMES TO ACCOMMODATE PARENTS' SCHEDULES
- INVOLVE PARENTS IN MAKING DECISIONS ABOUT HOW TITLE I FUNDS FOR PARENT ENGAGEMENT SHOULD BE SPENT
- SHOW EVIDENCE OF CONTINUOUS COMMUNICATION BETWEEN SCHOOL AND FAMILIES



# ENGLISH LANGUAGE ARTS FAST DATA



School	Grade	2023 Number of Students	2023 Mean Scale Score	2022 Mean Scale Score	2021 Mean Scale Score	Change 2023 to 2022	2023 % Level 3+	2022 % Level 3+	2021 % Level 3+
SHERWOOD	3	75	305	301	299	4	60	49	54
SHERWOOD	4	53	313	310	312	3	51	50	58
SHERWOOD	5	53	322	320	326	2	62	59	60
SHERWOOD	6	58	331	335	334	-4	64	69	67



# MATHEMATICS FAST DATA



School	Grade	Number of Students	2023 Mean Scale Score	2022 Mean Scale Score	2021 Mean Scale Score	Change 2023 to 2022	2023 % Level 3+	2022 % Level 3+	2021 % Level 3+
SHERWOOD	3	75	304	301	290	3	69	58	33
SHERWOOD	4	53	314	308	312	6	60	52	51
SHERWOOD	5	53	327	318	326	9	58	56	62
SHERWOOD	6	58	343	340	330	3	83	84	63



# SCIENCE FAST DATA



SCHOOL	Grade	Number of Students	2023 Mean Scale Score	2022 Mean Scale Score	2021 Mean Scale Score	Change 2023 to 2022	2023 Level 3-5	2022 Level 3-5	2021 Level 3-5
SHERWOOD	5	53	203	195	203	8	55	47	49



# DISTRICT & STATE COMPARISONS



State and County Comparisons ELA				
	3rd	4th	5th	6th
Sherwood	60%	51%	62%	64%
Brevard	56%	61%	59%	61%
State	50%	58%	54%	47%

State and County Comparisons Math				
	3rd	4th	5th	6th
Sherwood	69%	60%	58%	83%
Brevard	60%	61%	55%	67%
State	59%	61%	55%	54%





PARENT SURVEY

YOUTH TRUTH SURVEY

INSIGHT SURVEY



## PARENT SURVEY

Do you feel welcomed at your child's school? Yes 95% (same to last year)

Attending parent meetings/event: Never attended- 6.5% (Down 8% from last year)

Meetings/activities they would like to participate in: Family fun nights 73% (similar to last year)  
Followed by: Math Strategies 42% Reading Strategies 41%

Family engagement resources would you use if provided: Academic support 70%  
Followed by: Workshops to manage behaviors at home 45% (up 11% from last year)

Focus access per month: Never: 25% (Down 16% from last year)

### PARENTS PRAISED:

RCA  
APTT Nights to traditional Conference Nights  
Family Fun Events  
Communication From Teacher  
Sense of School Family

### PARENTS REQUESTED:

Parent volunteer information and opportunities  
Dates for events given in advance (school & classroom)  
Consistent communication about grades in Focus







# YOUTH TRUTH SURVEY

Highest growth was in Culture 7% to 23%  
Increase in almost ALL main categories  
ALL cohorts went up under Engagement

Summary Measure	Your School - Jan 2023	Your School - Jan 2022	Your School - Jan 2021	Your School - Jan 2020	Typical YouthTruth school	Typical Brevard school *
Engagement	89%	84%	94%	91%	88%	84%
Academic Challenge	38%	42%	51%	43%	49%	40%
Relationships	74%	76%	86%	78%	78%	71%
Culture	23%	7%	29%	11%	23%	20%
Instructional Methods	61%	60%	74%	67%	61%	53%
Belonging	32%	N/A	N/A	N/A	34%	30%





## INSIGHT SURVEY (TEACHERS)

- Increased in ALL domains
- Higher than BPA Average AND BPS Top Quartile scores
- Biggest Increase: Academic Opportunity (Increase by 1.0)
- Highest Score: Evaluation 9.2 (increase by .4)

	Winter 2022	Winter 2023	Brevard Avg	Brevard Top Quartile
Learning Environment	7.3	8.1	4.9	6.9
Peer Culture	7.8	8.2	5.5	7.5
Diversity, Equity, and Inclusion	7.5	8.2	5.3	7.1
Hiring Process	7.5	8.4	5.3	6.8
Academic Opportunity	7.7	8.7	5.4	7.2
School Operations	8.1	8.8	5.2	7.0
Instructional Planning for Student Growth	8.3	8.8	5.6	7.4
Leadership	8.5	8.8	5.7	7.4
Observation and Feedback	8.2	8.9	5.7	7.5
Professional Development	8.4	9.0	5.5	7.0
Evaluation	8.8	9.2	6.1	7.7





## SHERWOOD TITLE I FUNDING:

- SHERWOOD IS PROVIDED WITH \$\$219,250 TO PAY FOR SERVICES AND PROGRAMS FOR OUR STUDENTS, WITH A MINIMUM OF \$2,000 GOING TOWARD PARENT & FAMILY ENGAGEMENT.
- SCHOOL-BASED TITLE I FUNDS PAY FOR THE FOLLOWING:
  - PARENT & FAMILY ENGAGEMENT EVENTS AND MATERIALS
  - FIELD TRIPS
  - INTERVENTION MATERIALS
  - COMMUNICATION TOOLS
  - TECHNOLOGY
  - STAFF PROFESSIONAL DEVELOPMENT
- ALL OF OUR TITLE I FUNDS SUPPORT OUR SCHOOL IMPROVEMENT PLAN (SIP) GOALS.





# SCHOOL IMPROVEMENT PLAN (SIP) GOALS:



## #1. ESSA SUBGROUP SPECIFICALLY RELATING TO STUDENTS WITH DISABILITIES

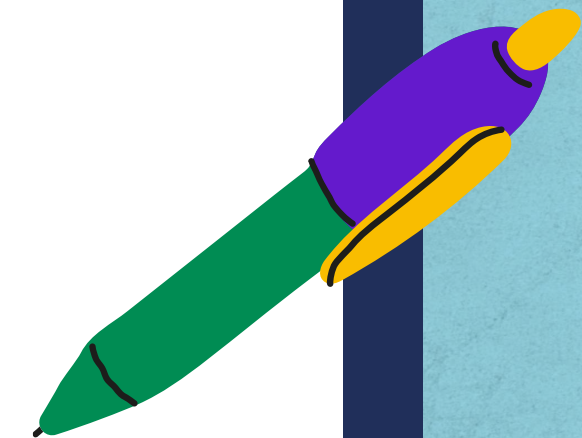
- INCREASE FEDERAL INDEX FOR STUDENTS WITH DISABILITIES (SWD) TO MEET THE TARGET OF 41% PROFICIENCY IN BOTH READING AND MATH AS MEASURED BY THE FAST PM3 (END-OF YEAR) ASSESSMENT.

## #2. INSTRUCTIONAL PRACTICE SPECIFICALLY RELATING TO ELA

- PERCENTAGE OF STUDENTS AT/ABOVE PROFICIENCY WILL INCREASE BY 5% FROM STAR PM 1 TO PM 3 FOR GRADES K-2ND.
- BY THE SPRING 2024 FAST, LITERACY ACHIEVEMENT FOR GRADES 3RD THROUGH 6TH WILL BE 62% (AN INCREASE OF 3% FROM 2023).

## #3. POSITIVE CULTURE AND ENVIRONMENT SPECIFICALLY RELATING TO EARLY WARNING SYSTEM

- ON THE 2024 YOUTH TRUTH SURVEY, THE AVERAGE FOR "CULTURE" WILL INCREASE FROM 2.14 TO 3.66 (+1.52) BASED ON STUDENT RATINGS (GRADE 3RD-6TH). IN ADDITION, THE AVERAGE FOR "BELONGING" WILL INCREASE FOR 2.28 TO 3.80 (+1.52) BASED ON GRADES 3RD THROUGH 6TH STUDENT RATINGS.





# SCHOOL IMPROVEMENT PLAN (SIP) GOALS:

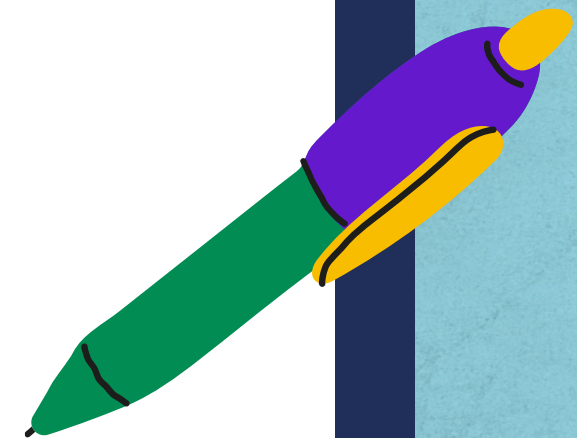
READING ACHIEVEMENT INITIATIVE FOR SCHOLASTIC EXCELLENCE (RAISE)

GRADES K-2 MEASURABLE OUTCOMES

- MEASURABLE OUTCOME GOALS WILL BE TO DEMONSTRATE STUDENT PROFICIENCY INCREASES BETWEEN 10% AND 20% FROM EACH I-READY DIAGNOSTIC ADMINISTERED
- 2023-2024 I-READY READING DIAGNOSTIC 2 GOALS:
  - KINDERGARTEN INCREASE TO 50% PROFICIENT
  - FIRST GRADE INCREASE TO 40% PROFICIENT
- 2023-2024 I-READY READING DIAGNOSTIC 3 GOALS:
  - KINDERGARTEN OVERALL PROFICIENCY INCREASING TO 52% OR ABOVE
  - FIRST GRADE OVERALL PROFICIENCY INCREASING TO 52% OR ABOVE
- FAST GOALS: TO INCREASE STUDENT PROFICIENCY BY 20% OR MORE BETWEEN PM 1 AND PM 3 ASSESSMENT PERIODS.
  - 2023-2024 FAST ASSESSMENT PROFICIENCY GOAL:
    - KINDERGARTEN INCREASE TO 52% PROFICIENT OR ABOVE
    - FIRST GRADE INCREASE TO 52% PROFICIENT OR ABOVE

GRADES 3-5 MEASURABLE OUTCOMES

- ON THE 2023-2024 FAST READING ASSESSMENT, STUDENTS IN GRADES 3-5 WILL INCREASE OVERALL PROFICIENCY FROM 58% TO 60%.





## RESEARCH SHOWS...

NO MATTER THE SOCIO-ECONOMIC STATUS, WHEN PARENTS ARE ENGAGED,

STUDENTS ARE MORE LIKELY TO:

- ATTEND SCHOOL REGULARLY
- EARN BETTER GRADES
- GET BETTER TEST SCORES
- HAVE MORE SELF-CONFIDENCE
- BE PROMOTED TO THE NEXT GRADE
- HAVE BETTER SOCIAL SKILLS
- GRADUATE
- CONTINUE THEIR EDUCATION



## TIPS FOR SUCCESS

- COMMUNICATE WITH YOUR CHILD'S TEACHER OFTEN THROUGHOUT THE YEAR! START AT THE BEGINNING OF THE YEAR...HOW DO YOU WANT TO COMMUNICATE WITH EACH OTHER?
- GIVE YOUR INPUT ON THE SCHOOLS TITLE I PLAN
- CONSIDER JOINING THE PTO, SCHOOL ADVISORY COUNCIL (SAC) OR THE DISTRICT PARENT LEADERSHIP TEAM. LET YOUR VOICE BE HEARD!
- ASK ABOUT OUR PARENT RESOURCE CENTER (CONTACT: [CADDELL.RACHEL@BREVARDSCHOOLS.ORG](mailto:CADDELL.RACHEL@BREVARDSCHOOLS.ORG)) OR ASK YOUR CHILD'S TEACHER FOR MATERIALS TO HELP YOU AT HOME.
- ATTEND ACADEMIC PARENT NIGHTS, SUCH AS: APTT, STEM NIGHT, LITERACY NIGHT.
- REACH OUT TO [CADDELL.RACHEL@BREVARDSCHOOLS.ORG](mailto:CADDELL.RACHEL@BREVARDSCHOOLS.ORG) TO DISCUSS AVAILABLE MATERIALS SHOULD YOU BE UNABLE TO ATTEND ONE OF THESE NIGHTS.



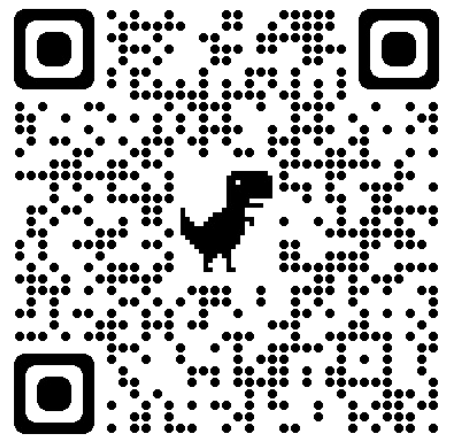
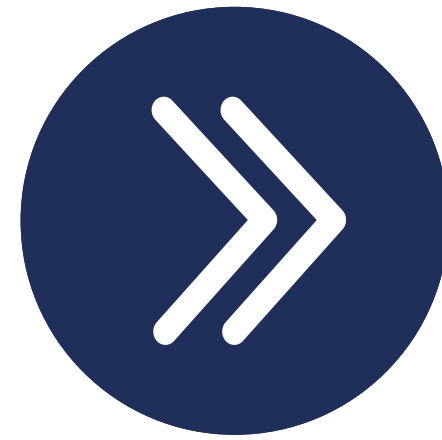
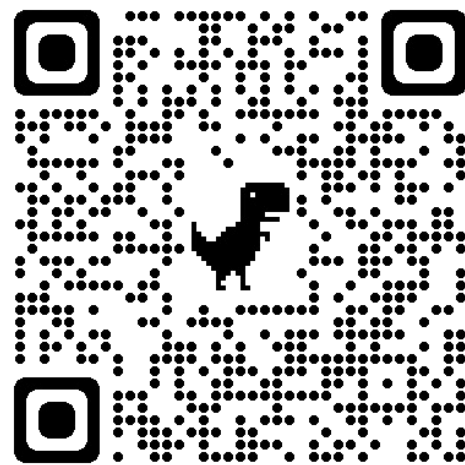
# P.T.O.



# S.A.C.



# P.B.I.S.



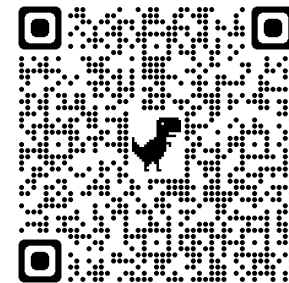


## TITLE I COMPLAINT PROCEDURE:

- PARENTS HAVE THE RIGHT TO SUBMIT COMMENTS REGARDING DISTRICT AND/OR SCHOOL TITLE I PLANS
- COMMENTS SHOULD BE TURNED IN TO THE SCHOOL PRINCIPAL
- THE SCHOOL PRINCIPAL WILL FORWARD THE COMMENTS TO THE DISTRICT TITLE I DEPARTMENT

WE WANT YOUR FEEDBACK! ANSWER  
5 QUICK QUESTIONS CONCERNING:

- OUR TITLE I PROGRAM
- SUGGESTED PURCHASES
- FAMILY ENGAGEMENT NIGHTS
- COMMUNIFICATION



VISIT OUR SCHOOL TITLE I PAGE TO  
REVIEW AND PROVIDE INPUT FOR OUR:

- PARENT & FAMILY ENGAGEMENT PLAN (PFEP)
- SCHOOL-FAMILY COMPACT
- SCHOOL IMPROVEMENT PLAN (SIP)





STAY INFORMED-VISIT OUR WEBSITE!

NEWSLETTER

FOCUS

For Staff

BPS Home

SCHOOLS ▾

SCHOOL CALENDAR

Welcome Back  
Sherwood Archers!

AUGUST 2023



Sandra Marines  
Principal



Danielle Lavelle  
Assistant Principal

SHERWOOD  
ELEMENTARY SCHOOL

TO SERVE EVERY STUDENT WITH EXCELLENCE AS THE STANDARD

Featured Stories

- SEPTEMBER Newsletter S'more
- SEPTEMBER Calendar Dates/Events
- Supply Lists '23-'24

LAUNCHPAD MENUS TRANSPORTATION CONTACT CALENDAR

SHERWOOD'S  
OPEN HOUSE & TITLE I MEETING

3RD GRADE HOUSE SORTING!  
LEARN ABOUT TITLE I  
MEET OUR TEACHERS  
VISIT CLASSROOMS

THURSDAY  
AUGUST 31ST  
5:15PM-7:00PM

Title I Open House

Sherwood Elementary 5411 POST ROAD MELBOURNE, 32935  
PH: 321-254-6424 FAX: 321-877-0956

SEPTEMBER 2023

SUNDAY	MONDAY	TUESDAY	WEDNESDAY	THURSDAY	FRIDAY	SATURDAY
27	28 i-Ready Testing Window Begins (3rd-6th)	29	30	31 ANNUAL TITLE I MEETING & OPEN HOUSE 5:15PM - 7:00PM	1 EARLY DISMISSAL	2
3	4 NO SCHOOL Labor Day	5 Boosterthon FUN RUN FUNDRAISER KICKOFF (FUN RUN SEPT. 13TH)	6 FAST TESTING ELA 3RD-6TH	7 FAST TESTING MATH 3RD-6TH	8 EARLY DISMISSAL	9
10	11	12 AUG. 13TH STAR Reading TESTING-ELA K-2ND	13 FUN RUN GRADES K-6TH 1ST PTO MEETING @ 9:30M	14 STAR Math TESTING-ELA K-2ND	15 EARLY DISMISSAL	16